

Allermuir

Conic Tables

allermuir.com

Conic – Low Level Tables

Design – PearsonLloyd

Conic’s range of low level tables work effortlessly with both the Conic and Open ranges given that they share a common design language. The beautifully simple Polished Chrome wire base offers a light functional structure, that allows the tables to work effortlessly in a multitude of environments.



standard & optional features

- Standard feature
- Not available

| | A636-24RD | A636-21SS | A638-36RD | A638-32SS | A639-4128S |
|---|--------------------------|---------------------------------|--------------------------|---------------------------------|--------------------------------------|
| | Round Low Level 24" dia. | Soft Square Low Level 21" x 21" | Round Low Level 36" dia. | Soft Square Low Level 32" x 32" | Soft Rectangular Low Level 41" x 28" |
| Weight | 17lbs | 16lbs | 38lbs | 28lbs | 35lbs |
| 1" laminate faced MDF core top with a clear finish edge profile | ● | ● | ● | ● | ● |
| Wire frame finished in Polished Chrome | ● | ● | ● | ● | ● |
| Plastic glides | ● | ● | ● | ● | ● |

Optional features:

| | | | | | |
|---|--------|--------|--------|--------|--------|
| Wire frame available in Silver M04, New Black, White, Soft Gold, Soft Silver, Dark Bronze, or Deep Mulberry | + \$80 | + \$80 | + \$80 | + \$80 | + \$80 |
| Table edge profile can be stained in Solid Black, Espresso and Solid White | + \$30 | + \$30 | + \$30 | + \$30 | + \$30 |

- * [Click here to see available Edge Details](#)
- * [Click here to see available Edge Stain Finishes](#)
- * [Click here to see available Laminate Options](#)
- * [Click here to see available Solid Surface Options](#)
- * [Click here to see available Table Metal Finishes](#)
- * [Click here to see Non-Stock Table Top Information](#)
- * [Click here to see the full range of Conic soft seating](#)

Ships Semi-KD = Knock Down (Needs some assembly)

| Code | Edge | Global Laminates GL (37) | Solid Surface A (80, 82) |
|--|----------------|--------------------------|--------------------------|
| A636-24RD • Round • Low level • 16"h x 24" dia. | 37 80 82 | 1,044 | 3,142 |
| A636-21SS • Soft square • Low level • 16"h x 21" x 21" | 37 80 82 | 1,044 | 3,142 |
| A638-36RD • Round • Low level • 12"h x 36" dia. | 37 80 82 | 1,353 | 4,076 |
| A638-32SS • Soft square • Low level • 12"h x 32" x 32" | 37 80 82 | 1,353 | 4,076 |
| A639-4128S • Soft rectangle • Low level • 12"h x 41" x 28" | 37 80 82 | 1,491 | 4,523 |

A, B = Grade A & B Laminate Range

A = Grade A Solid Surface

Edge 37, 80, 82 = Edge Detail

All prices listed in US \$

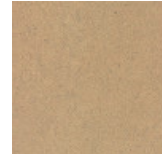
dimensions – OH - Overall Height OD - Overall Depth OW - Overall Width AH - Arm Height SH - Seat Height SW - Seat Width SD - Seat Depth



Conic

Edge Stains

Standard



Clear

Optional



Solid Black



Espresso



Solid White

Standard Metal Finishes



Chrome/
Polished
Aluminum



White



New Black



Soft Gold



Soft Silver

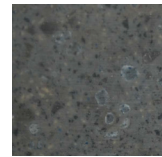


Dark Bronze



Deep Mulberry

Grade A Solid Surfaces Grade A



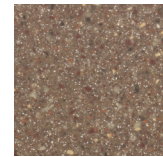
Lava Rock



Cameo White



Linen



Canyon



Nocturne

Global Laminates



Fog



Dark Chocolate



Fossil



Diamond Black



Mouse



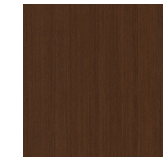
Sarum Gray



Storm



Brite White



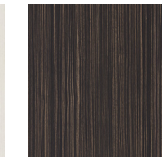
Chestnut
Woodline



Oiled Walnut



White Ash



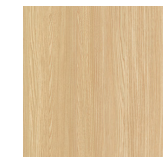
Ebony



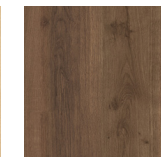
Smoky Brown
Pear



Millennium Oak



Natural Ash



Planked
Coffee Oak

Non-Stock Table Top Information Ordering Instructions:

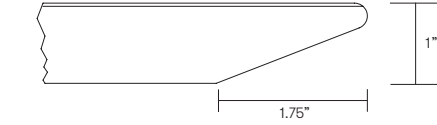
In addition to Allermuir's standard graded-in table top finishes, non-stock laminates and solid surfaces are available.

Please contact US Customer Service to confirm availability and to request pricing.
Phone (419)887.5806
Toll free (888)887.5806

The full product specification is needed at the time of your call including the manufacturer's name, pattern name, product number and finish.

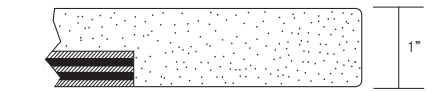
We may require a sample to be mailed to our corporate headquarters to ensure the material meets our quality standards. Allermuir reserves the right to reject any non-stock top material that, in Allermuir's opinion, is unsuitable for application.

Samples can be sent to:
Allermuir
Attn: Internal Sales Support
4111 N. Jerome Road
Maumee, Ohio 43537



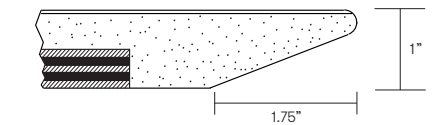
Edge Detail # 37

HPL laminate over a 1" MDF core counter balanced. The edge is cut back with a chamfer. The edge is clear finish as standard or can be stained.



Edge Detail # 80

Solid surface 1" thick backed with hardwood plywood.



Edge Detail # 82

Solid surface 1" thick backed with hardwood plywood.